

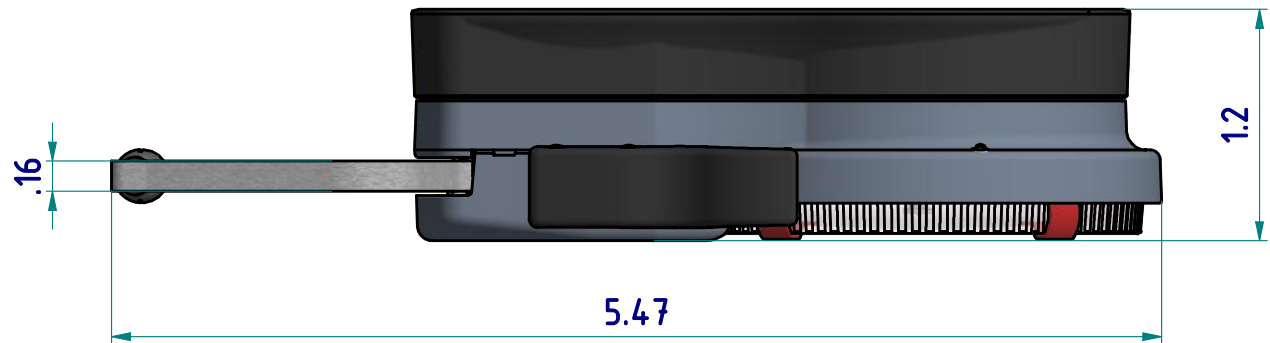
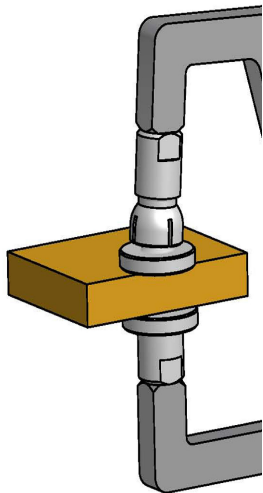
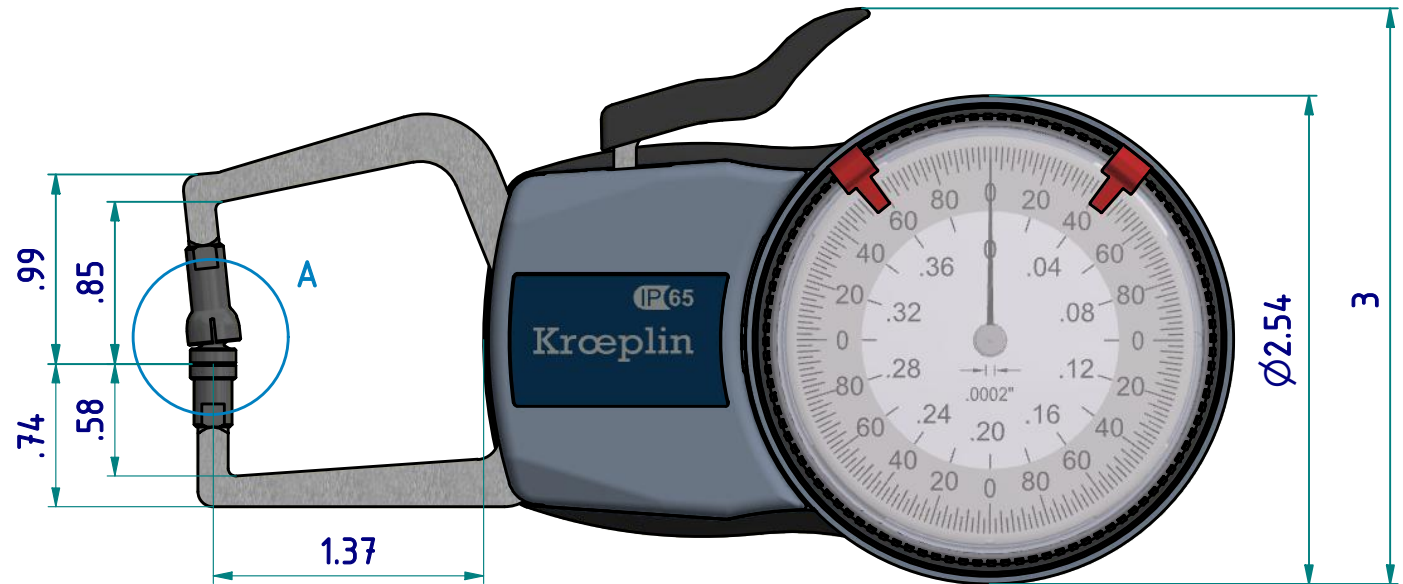
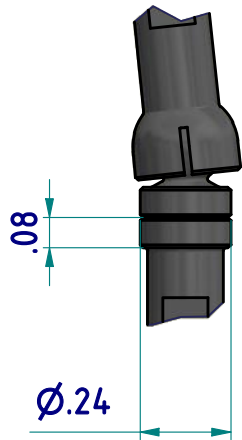
# data sheet: D610T

Kroeplin GmbH  
Gartenstraße 50  
D-36381 Schlüchtern

Tel.: 06661 86 0  
Fax: 06661 86 39  
Mail: sales@kroeplin.com  
Web: www.kroeplin.com

**Kroeplin**  
Längenmesstechnik

A ( 2 : 1 )



subject to technical alterations

**type:** D  
**range:** 0 - .40 INCH  
**range of indication:** 0 - .41 INCH  
**digital step:** -  
**scale interval:** .0002 INCH  
**measuring force:** 0,8 - 1,2 N  
**weight:** 175 g

acceptable deviations  
VDI/VDE/DGQ 2618 Bl. 12.1/13.1)  
**max. permissible errors "G":** .0010 INCH  
**repeatability "r":** .0004 INCH  
**reference temperature:** 20° C  
**operation temperature:** 10° C - 30° C  
**storage temperature:** -10° C - 50° C

**scale:** 1:1  
**drawing-nr.:** DAB-D610T\_KR\_I  
**date of issue:** 12.01.09  
**name:** T.Koenig  
**revision status:** 2000  
**revision date:** 03.09.2012