

data sheet: A1236

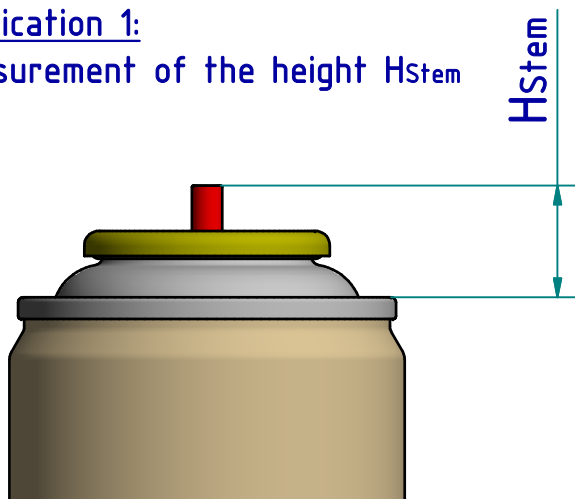
Kroeplin GmbH
Gartenstraße 50
D-36381 Schlüchtern

Tel.: 06661 86 0
Fax: 06661 86 39
Mail: sales@kroeplin.com
Web: www.kroeplin.com

Kroeplin
Längenmesstechnik

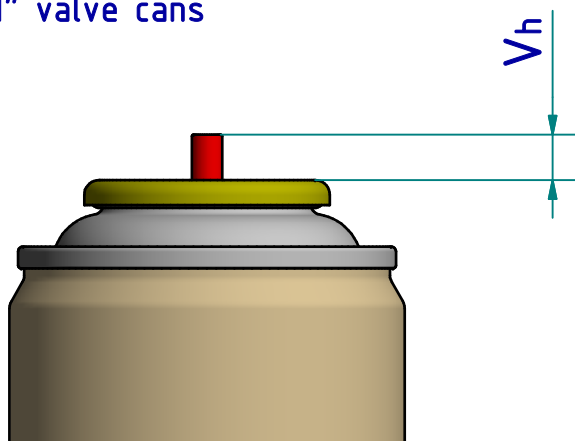
Application 1:

measurement of the height H_{stem}

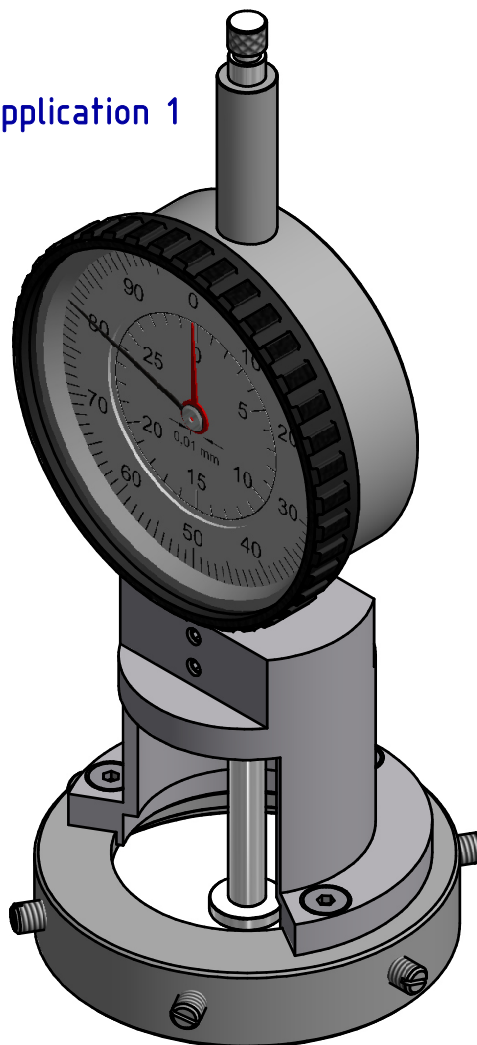


Application 2:

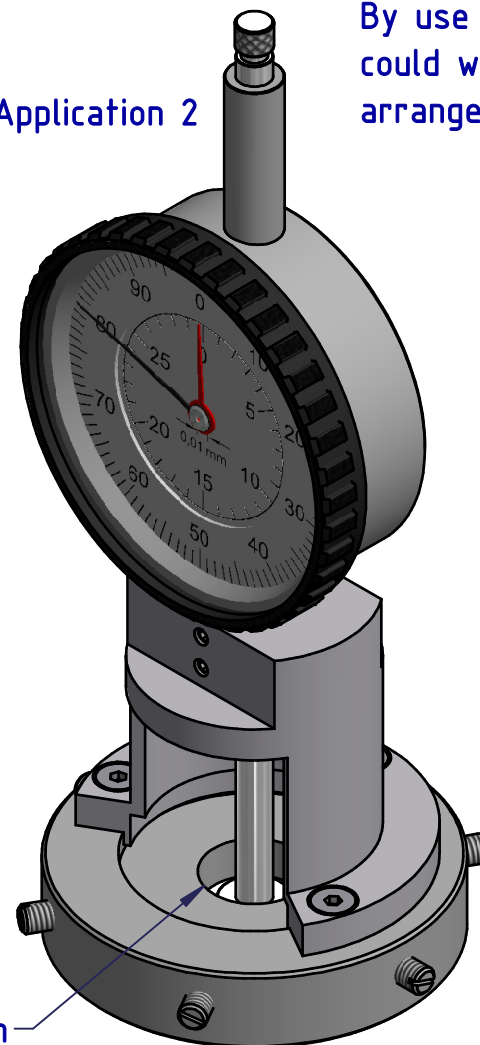
measurement of the valve height " V_h "
on 1" valve cans



Application 1



Application 2



By use the insertion
could with this gauge
arrange the application 2.

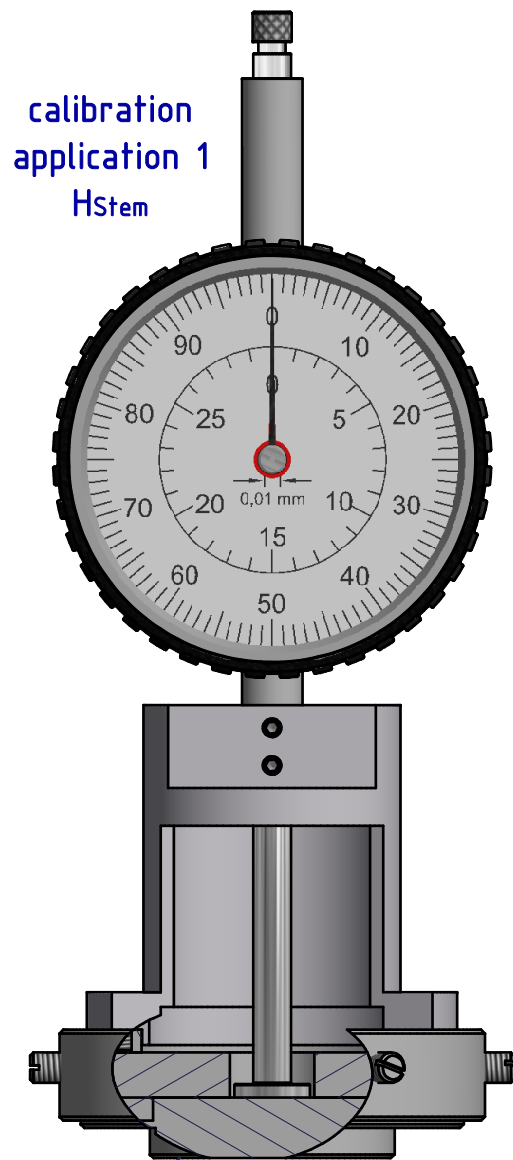
subject to technical alterations

type: aerosol
range: 0 - 30 mm
range of indication:
digital step:
scale interval: 0,01 mm
measuring force: 0,7 - 1,3 N
weight: ca. 280 g

acceptable deviations
VDI/VDE/DGQ 2618 Bl. 12.1/13.1)
max. permissible
errors "G": 0,03 mm
repeatability "r": 0,02 mm
reference temperature: 20° C
operation temperature: 10° C - 30° C
storage temperature: -10° C - 50° C

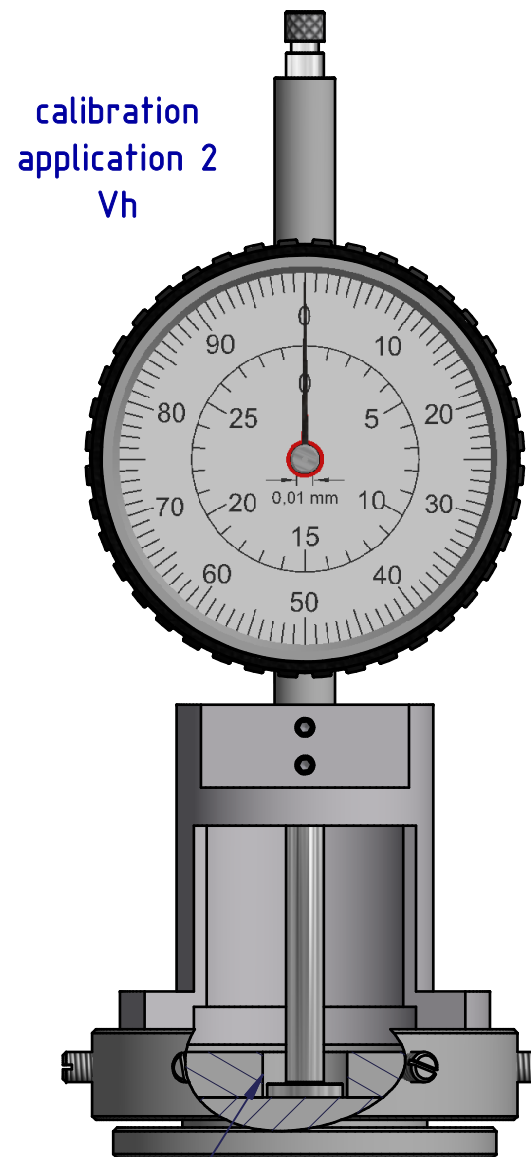
scale: 1 : 1
drawing-nr.: IDW-A1236-DB_e
date of issue: 11.02.16
name: A. Wess
revision status:
revision date:

A1236



calibration
application 1
Hstem

adjust ring



calibration
application 2
Vh

insertion

adjust ring

4

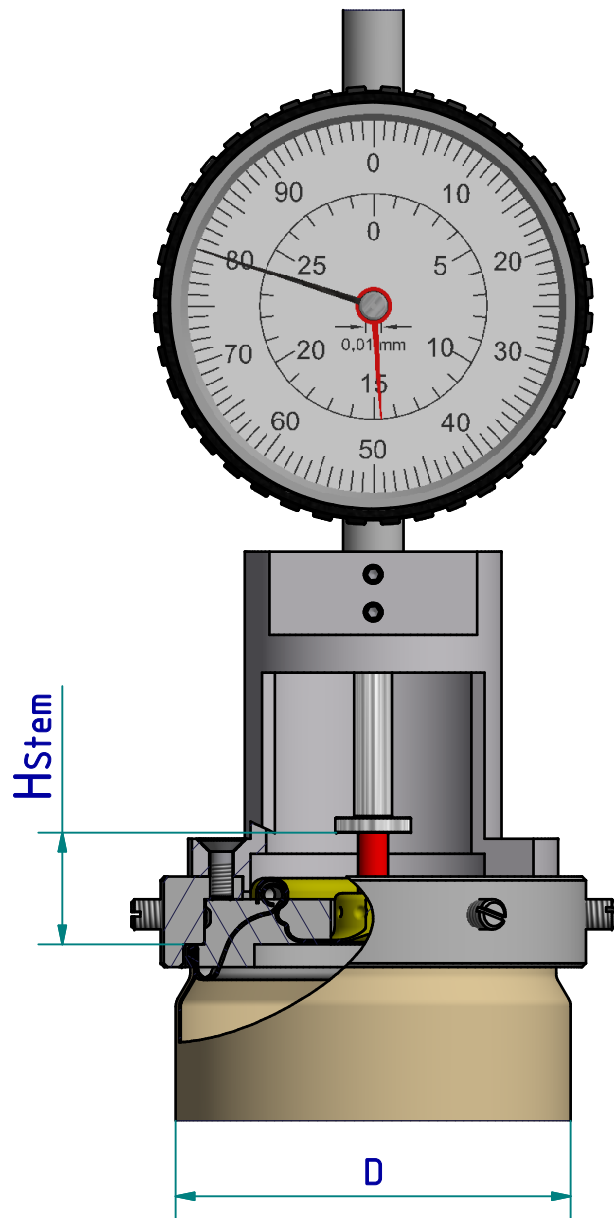
3

2

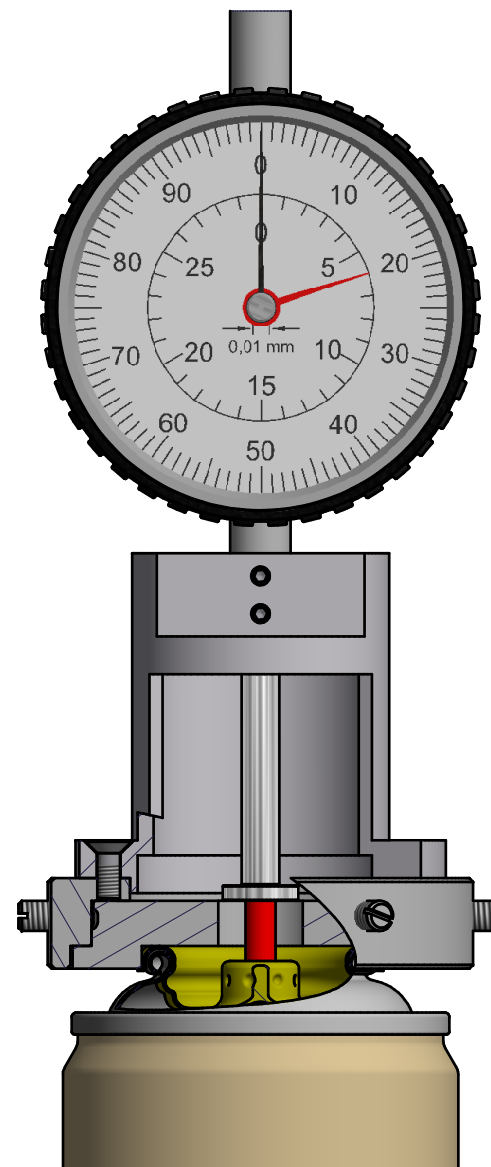
1

A1236

meaurement of
the height H_{Stem}



measurment of the
valve height "Vh"



4

3

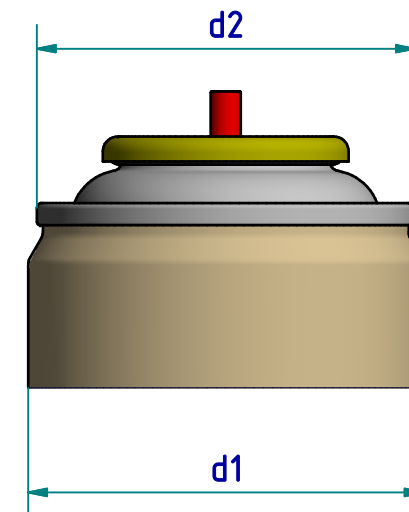
2

1

A1236

chart of types

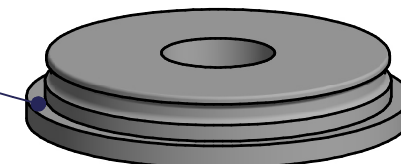
Instrument, Order-No.	Can diameter		Order-No. bearing ring	Order-No. insertion	Order-No. adjust ring
	d1	d2			
A1234	45mm	43,6mm	A1234-10	A1234-02	A1234-03
A1235	49mm	47,8mm	A1235-10	A1235-02	A1235-03
A1236	52mm	50,7mm	A1236-10	A1236-02	A1236-03
A1237	57mm	55,4mm	A1237-10	A1237-02	A1237-03
A1238	65mm	63,2mm	A1238-10	A1238-02	A1238-03



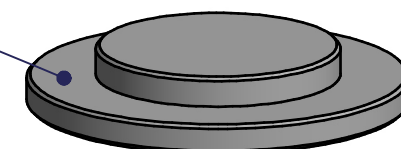
bearing ring



insertion



adjust ring



The mentioned gauges on the top diversify in the dimensions of the partsl "bearing ring, insertion and calibration part" and qualified there by for the measure on tin can with different diameter.

Supporting rings, calibration parts and insertion are available for different can diameters and can also be ordered separetely. A alteration of any present gauge to another type is there by possible.